

# Barrington Road Side Extension, Crouch End

Family living areas extended in to new double height side extension.

LOCATION

*London Borough of Haringey, London N8*

STATUS

*Completed*

USE

*Residential*

CLIENT

*Private*

STRUCTURAL ENGINEER

[\*Michael Barclay Partnership\*](#)

ARCHITECTURAL GLAZING

[\*Finepoint Glass\*](#)











## Generous living areas arranged around a new double height space

This space links the lower ground floor to the ground floor and allows for new, generous living spaces better connected with the rear garden. By carefully reorganising the internal layouts a new guest bedroom/study has been created on the ground floor, and a new WC and utility room in the basement.

## Drawing light deep in to the basement

The infill extension is set back from the main frontage and takes the form of a glass box that sits slightly away from the adjoining house and allows light to enter deep in to the new basement accommodation.

Our services included detailed design and specification of the new kitchen, staircase, and lighting scheme.



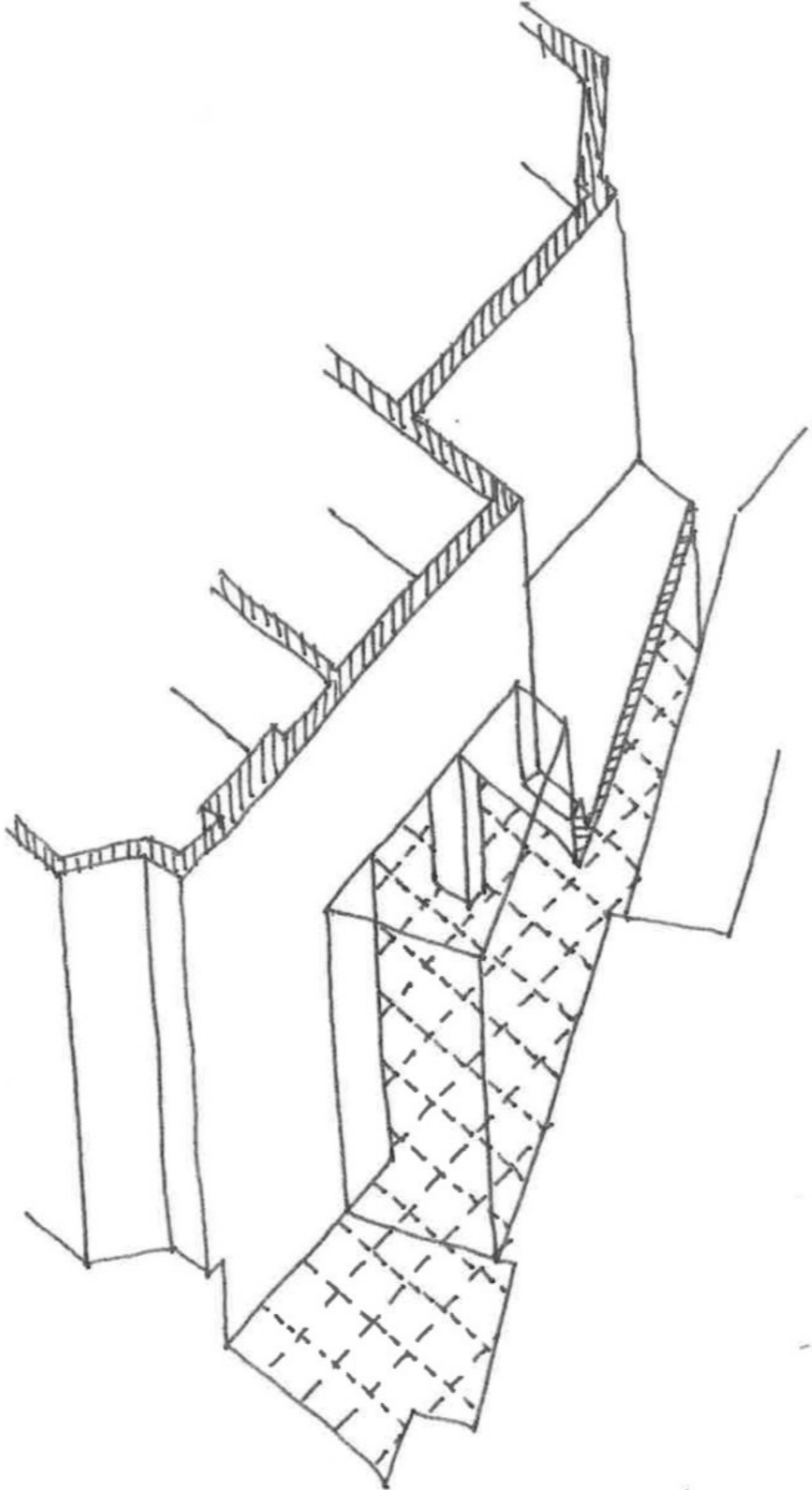
# Working with the characteristics and potential of the existing house and surroundings

The house is an end of terrace two storey family home in Crouch End. The curved layout of the street has formed small groups of terraces with irregular gaps between each building group.

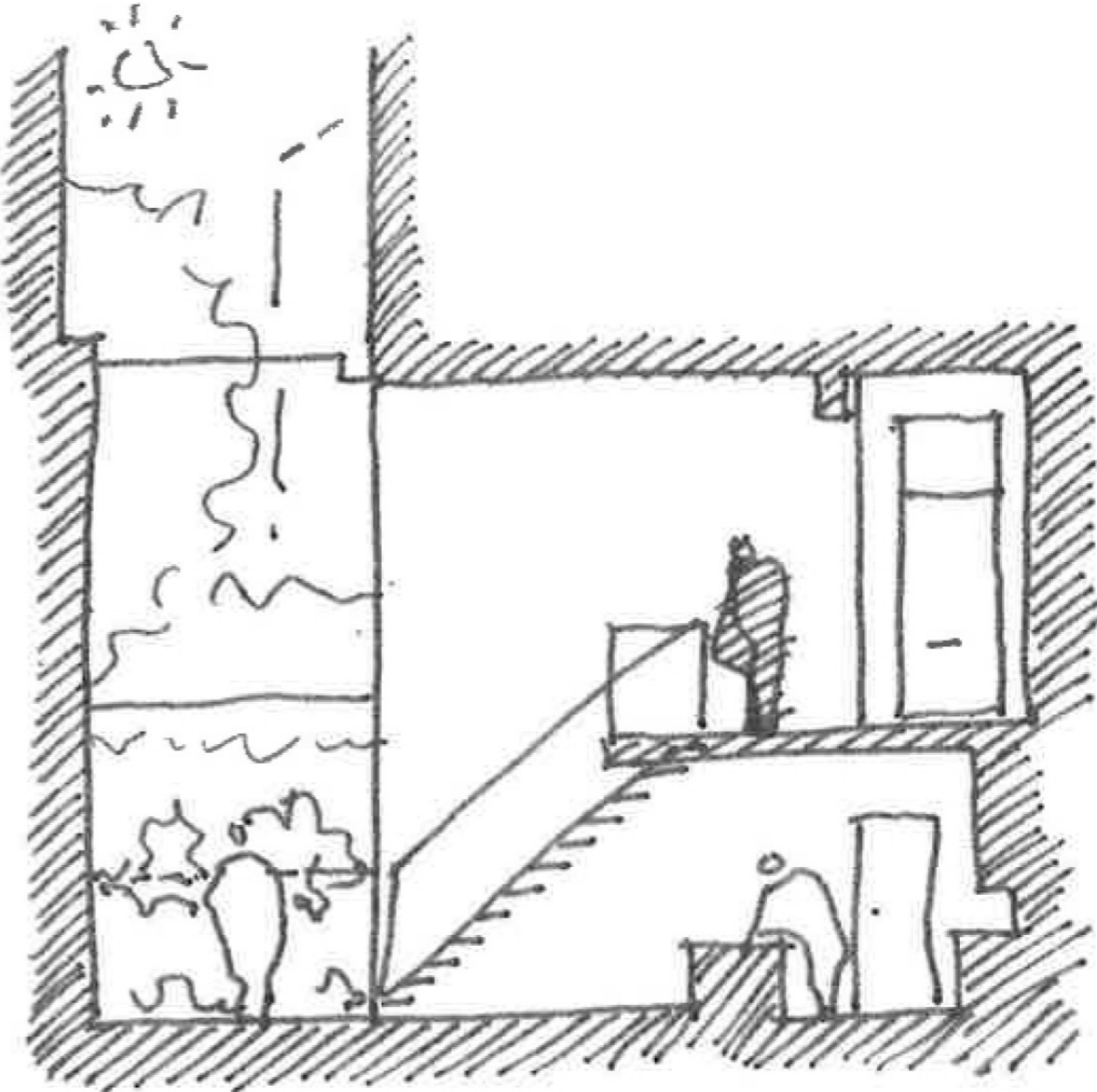
The existing living spaces in the house were dark and cramped, with an awkward connection between the house and rear garden.



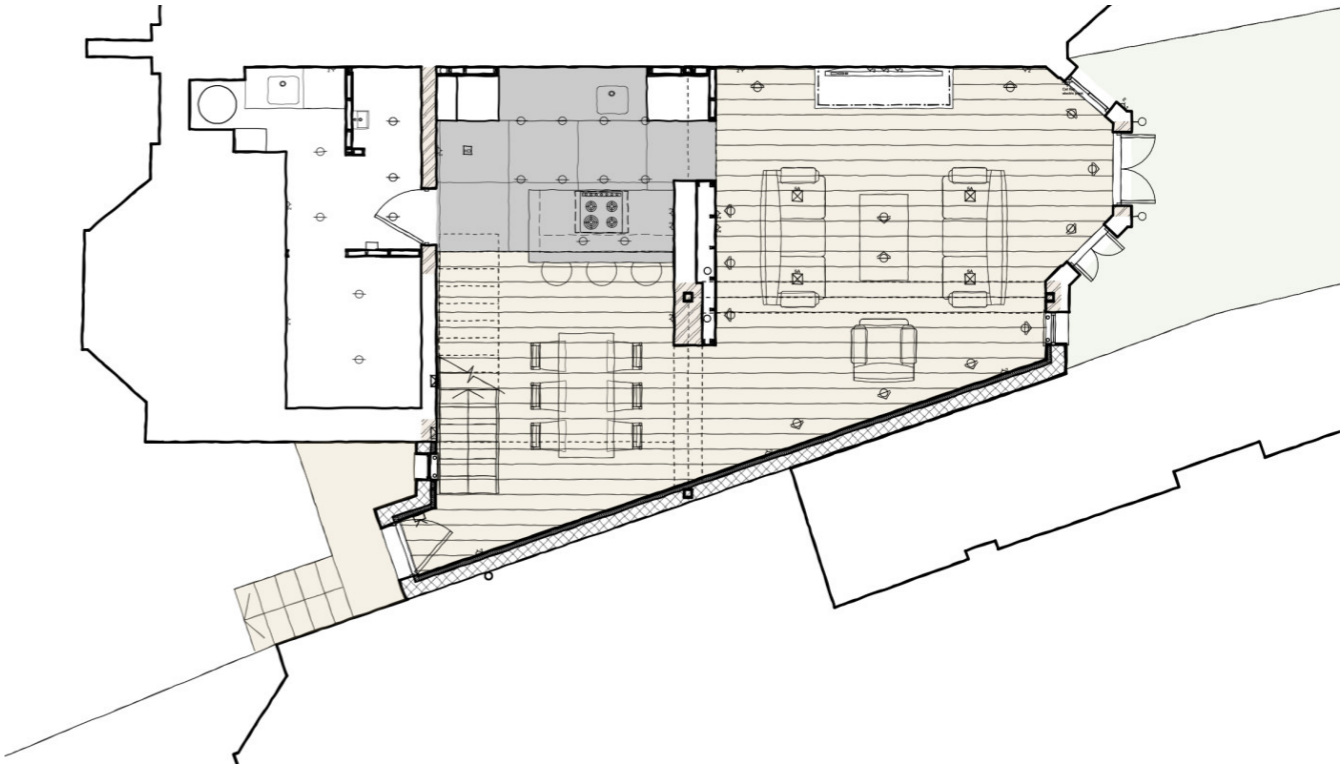
The main design idea to improve and extend the family living areas was to extend the existing part basement and to infill the gap to the adjoining house in order to create a new, light filled double volume space.



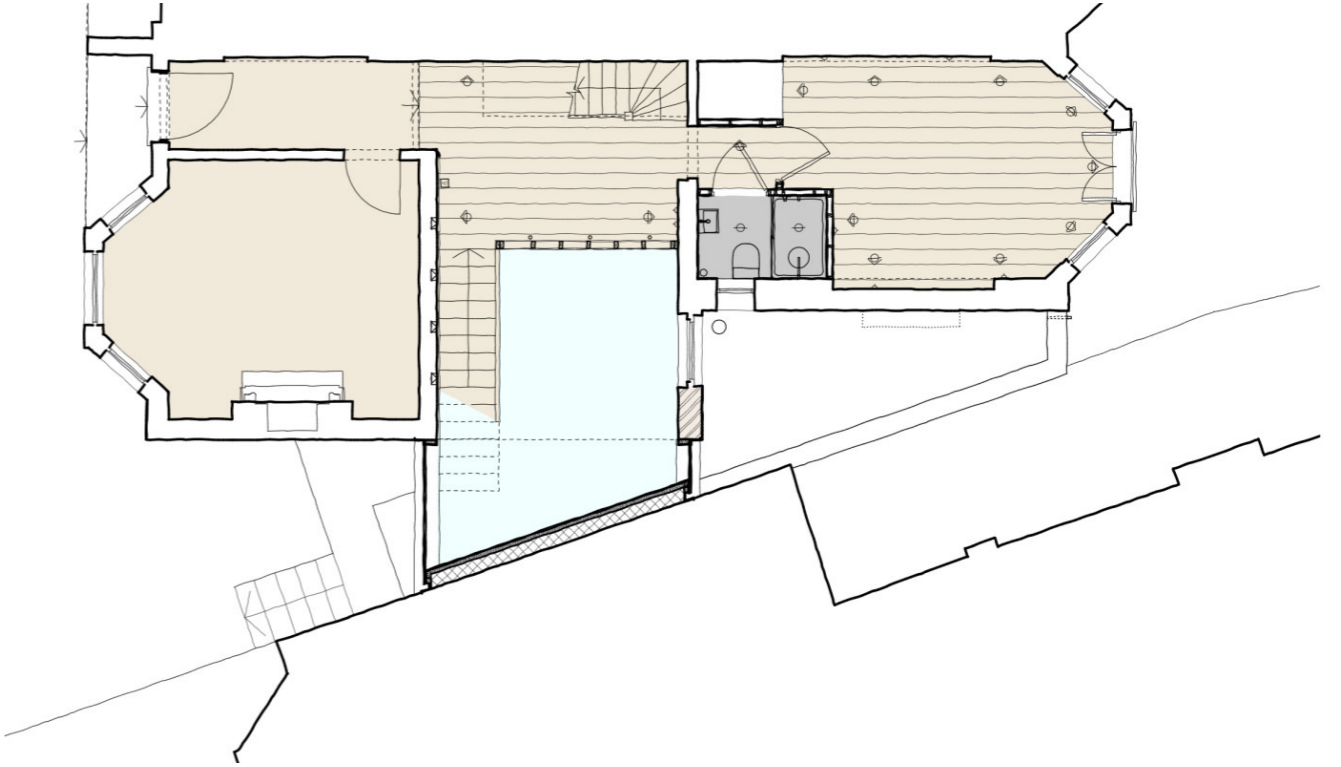
The main design idea to improve and extend the family living areas was to extend the existing part basement and to infill the gap to the adjoining house in order to create a new, light filled double volume space.



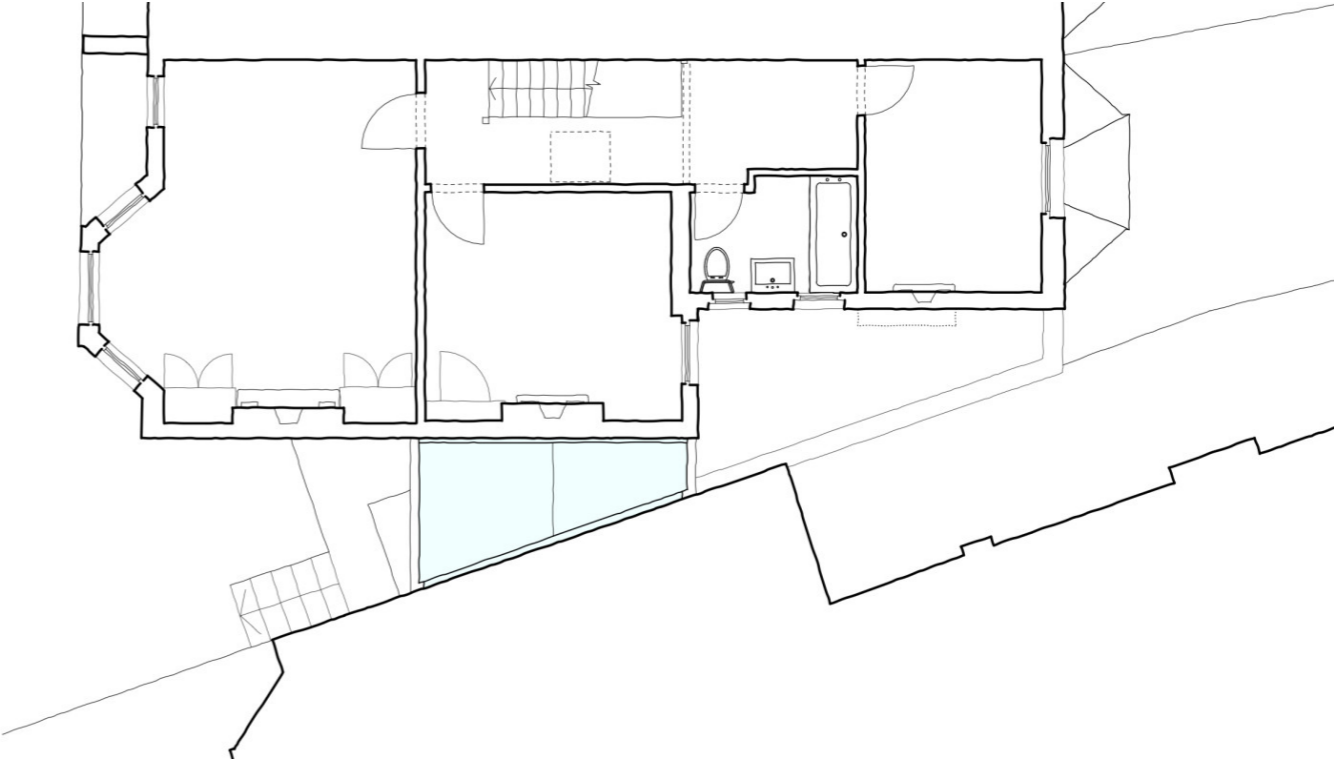
The main design idea to improve and extend the family living areas was to extend the existing part basement and to infill the gap to the adjoining house in order to create a new, light filled double volume space.



The main design idea to improve and extend the family living areas was to extend the existing part basement and to infill the gap to the adjoining house in order to create a new, light filled double volume space.



The main design idea to improve and extend the family living areas was to extend the existing part basement and to infill the gap to the adjoining house in order to create a new, light filled double volume space.



The development is located in Crouch End, North London











