

# Blandfield Road, Balham

## Subtle transformation and extension of a Victorian terraced house.

LOCATION  
*Balham, London SW12*

STATUS  
*Completed*

USE  
*Residential*

CLIENT  
*Private*

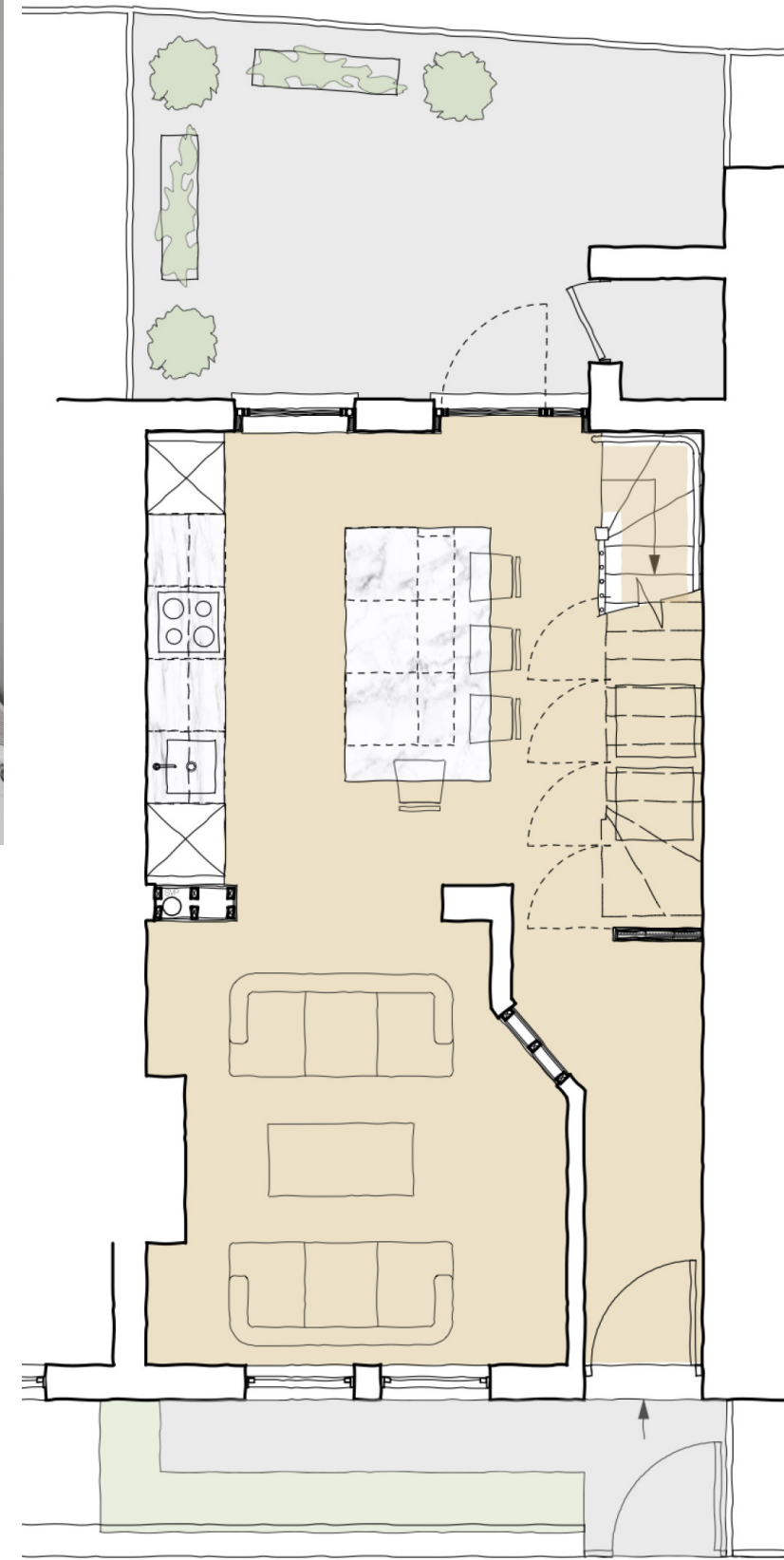
CONTRACTOR  
[\*HASSCO\*](#)

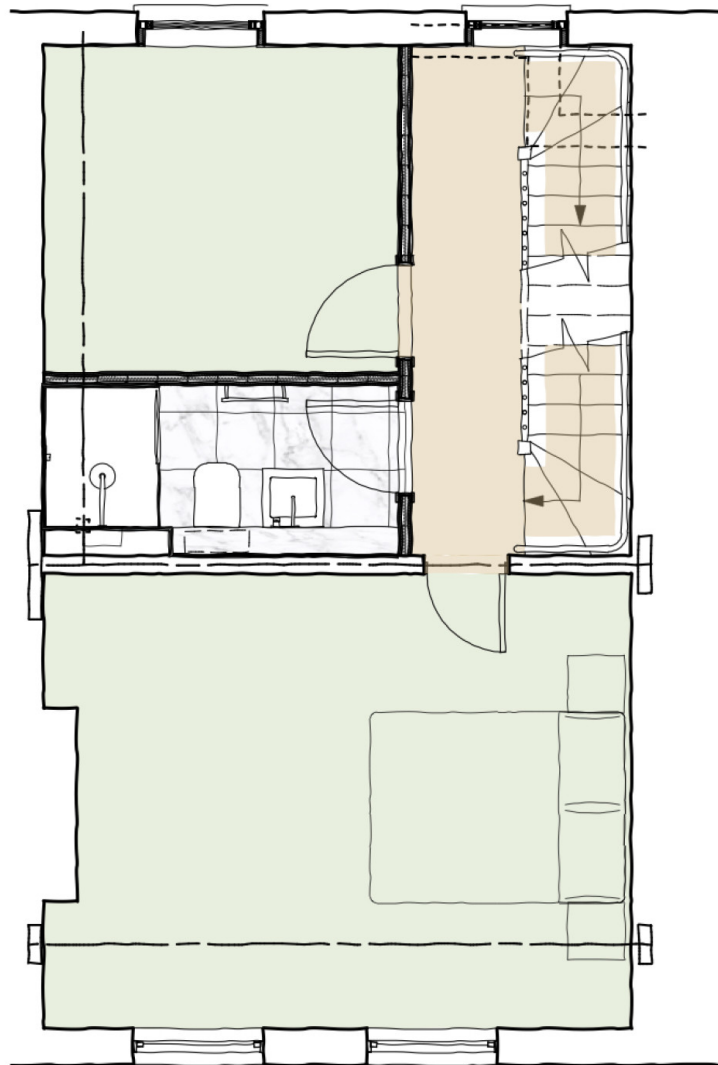
















## Creating light filled and functional spaces

On the ground floor the new layout allowed us to create a much more functional and open kitchen and living space that better suited our clients lifestyle. By reglazing the existing rear wall openings with new slimline aluminium units the whole space feels much lighter and the connection with the rear garden has been greatly enhanced.

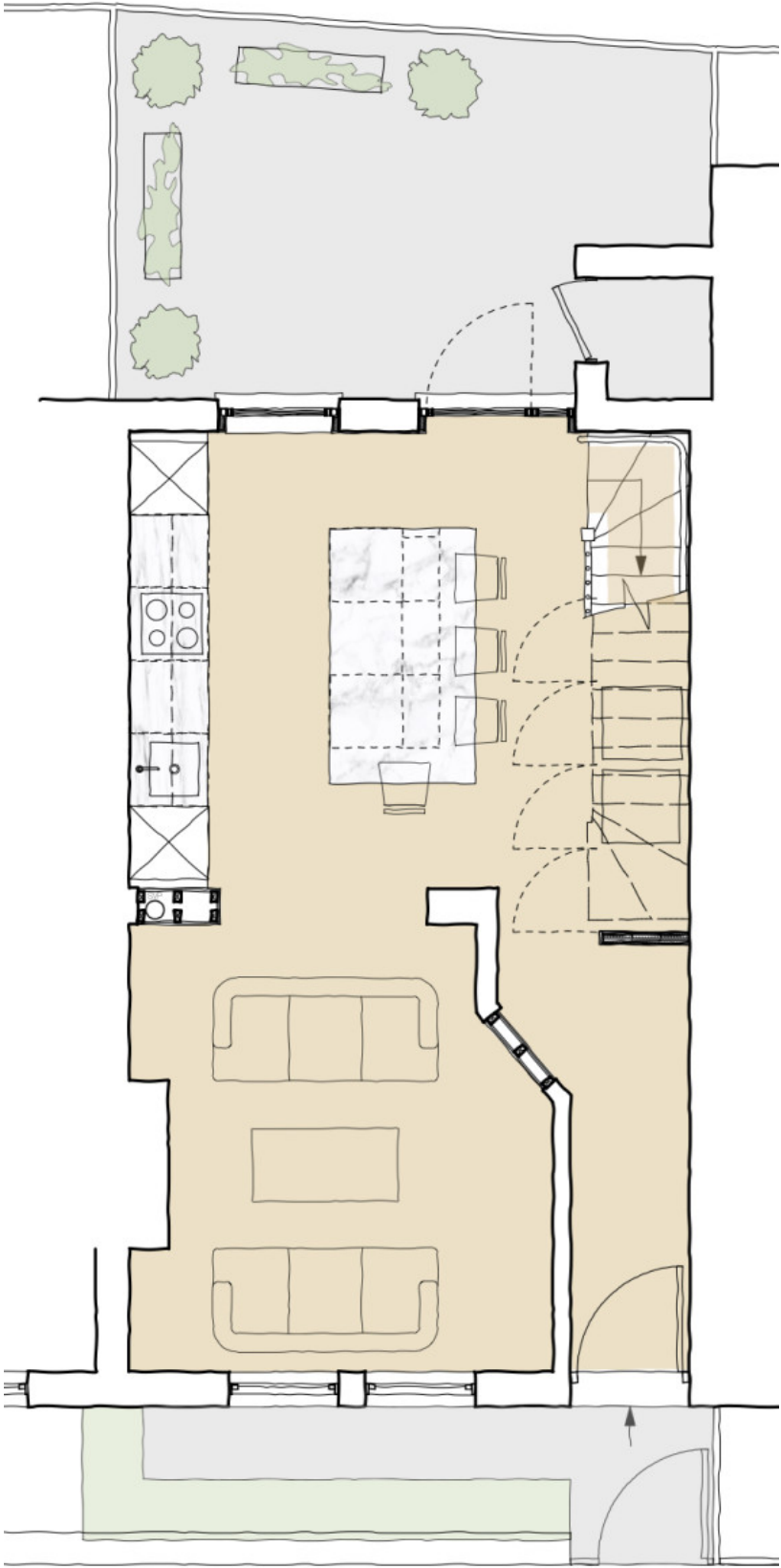


On the first floor we have created a new shower room and second bedroom whilst avoiding alterations to the front bedroom.

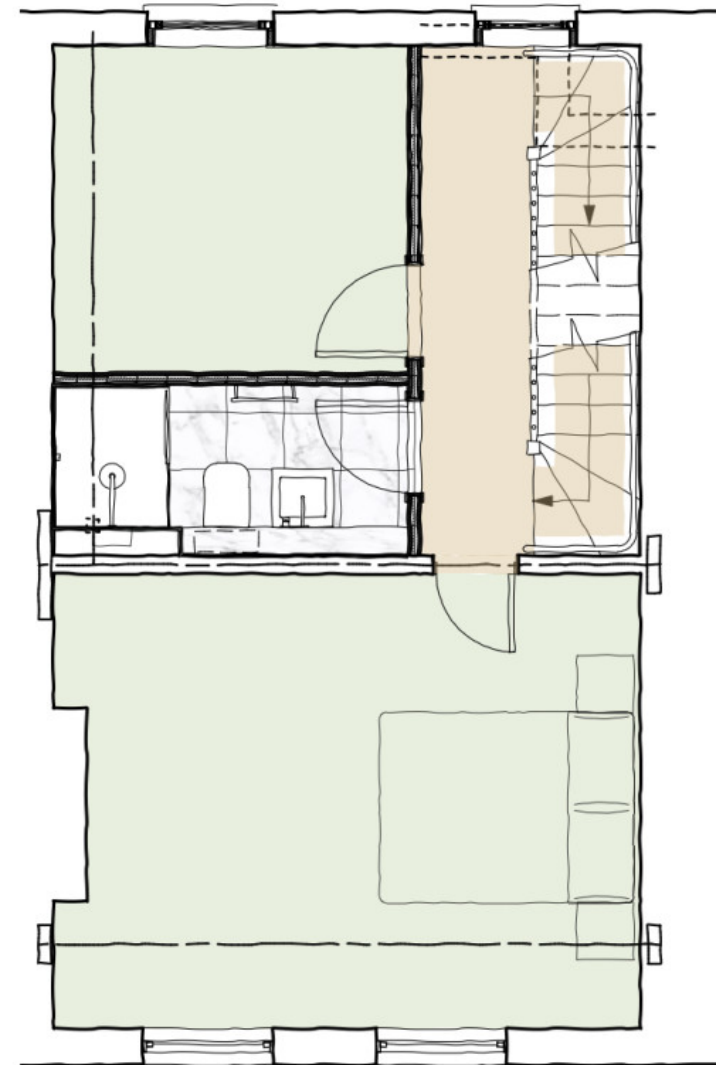
The stair landing is now flooded with light and leads on to the staircase up to a new loft extension containing the master bedroom suite, eaves storage and a stair landing that will also function as an informal study area.



Working through a range of design options which included a variety of potential internal alterations and extensions our final scheme hinged around a central design idea which unlocked the potential of all floors of the house without extending the footprint, by replacing the staircase with a new arrangement running in the opposite direction, from back to front of the house.

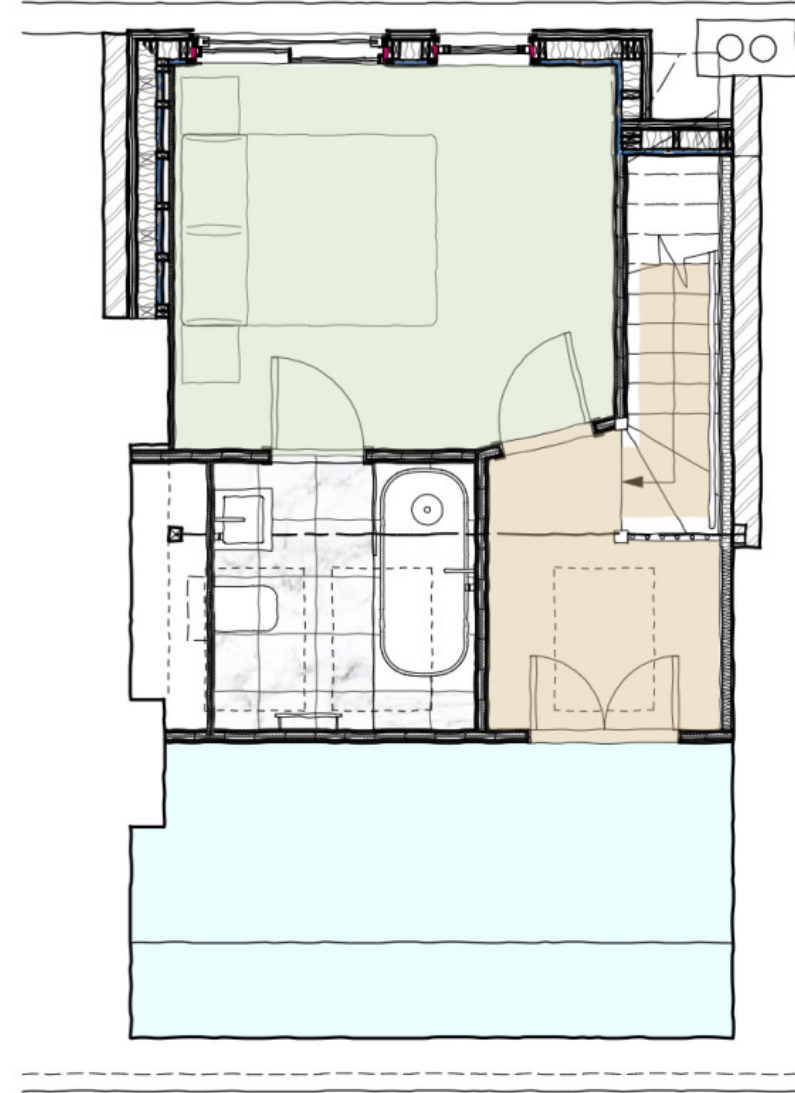


Working through a range of design options which included a variety of potential internal alterations and extensions our final scheme hinged around a central design idea which unlocked the potential of all floors of the house without extending the footprint, by replacing the staircase with a new arrangement running in the opposite direction, from back to front of the house.





Working through a range of design options which included a variety of potential internal alterations and extensions our final scheme hinged around a central design idea which unlocked the potential of all floors of the house without extending the footprint, by replacing the staircase with a new arrangement running in the opposite direction, from back to front of the house.



# A brief to transform and enhance our clients home

Haines Phillips were approached with a brief to transform the living spaces and upper floors of our clients two storey terraced house in Balham, south London within a limited budget.

The existing ground floor kitchen and living spaces did not make best use of the space or connection with the rear garden patio. The bathroom and second bedroom were awkwardly arranged and made for a cramped and dark first floor layout.

The development is located in the Balham, South London



