

Glazed Rear Extensions, Barrington Road

Rear and loft extensions to family home.

LOCATION

Crouch End, London N8

STATUS

Completed

USE

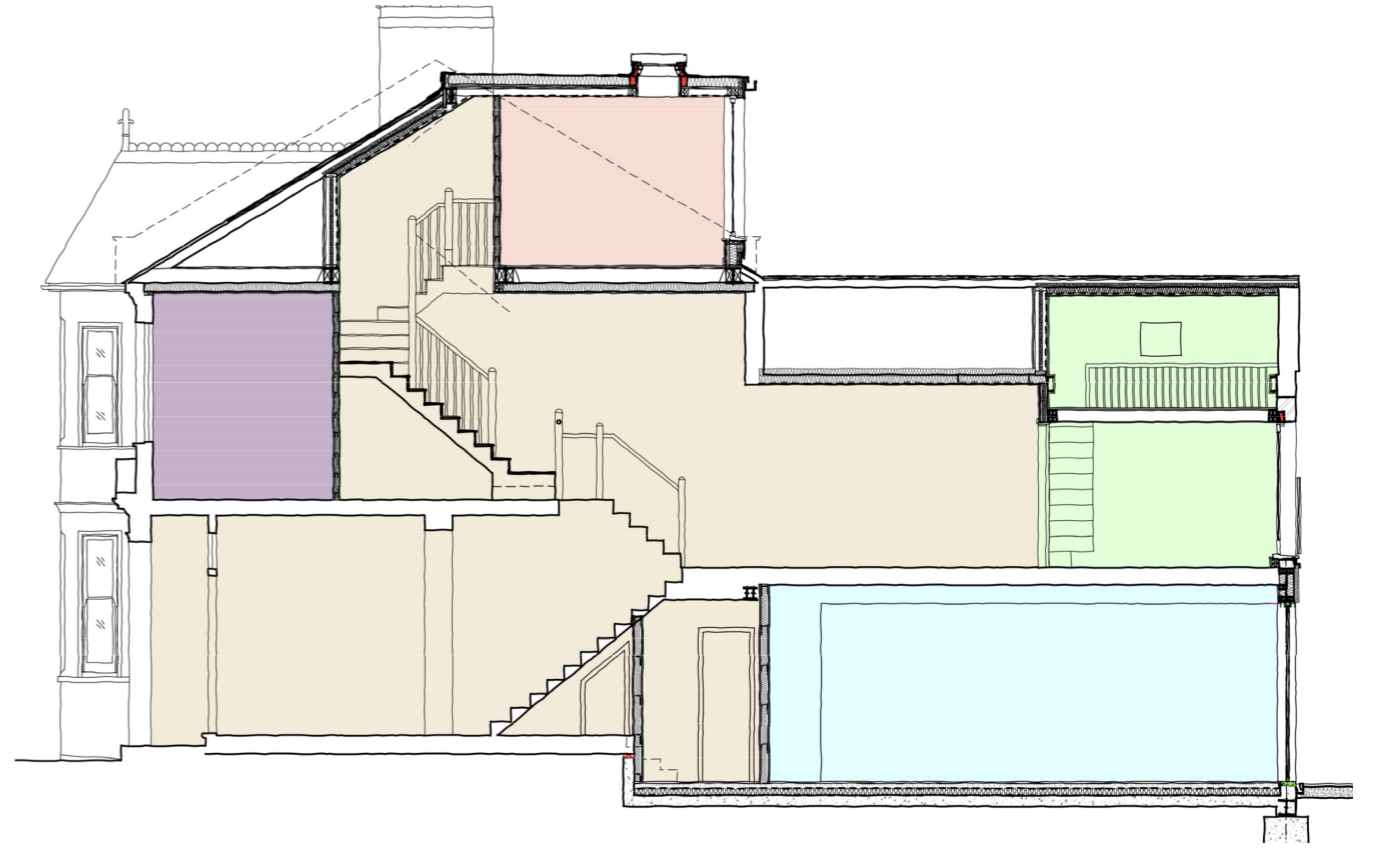
Residential

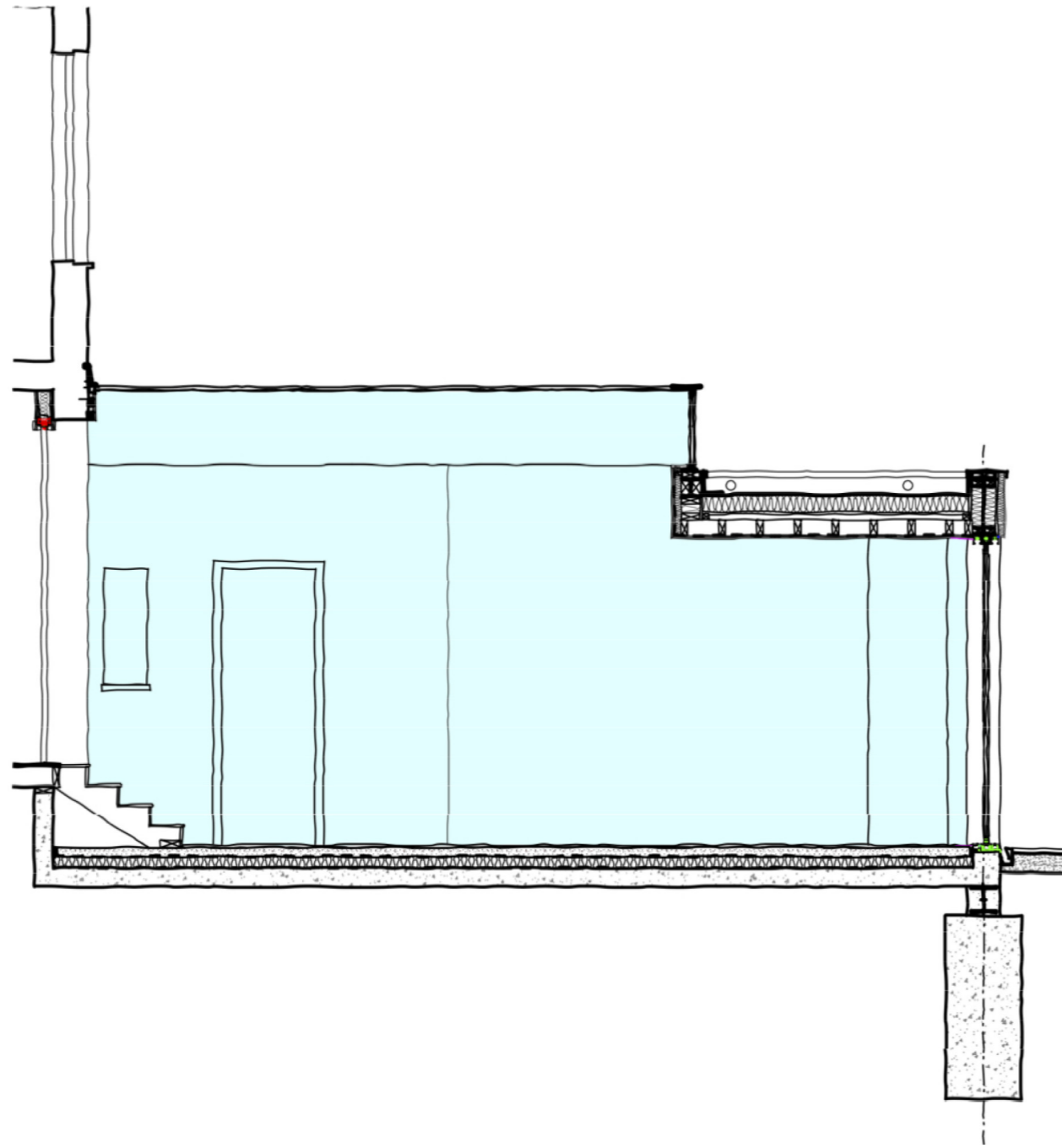
CLIENT

Private









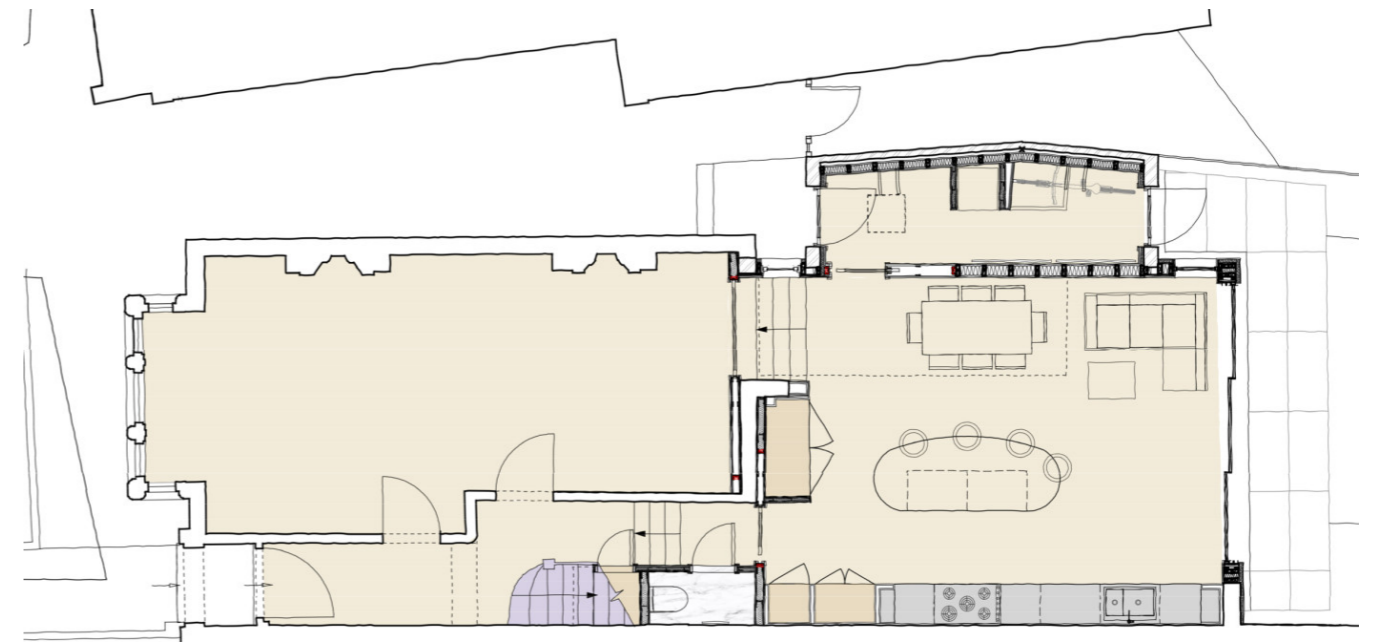
Enhancing and enlarging the family home

The existing house is a semi-detached two storey early 20th century family house with a rear boundary facing out towards a local park.

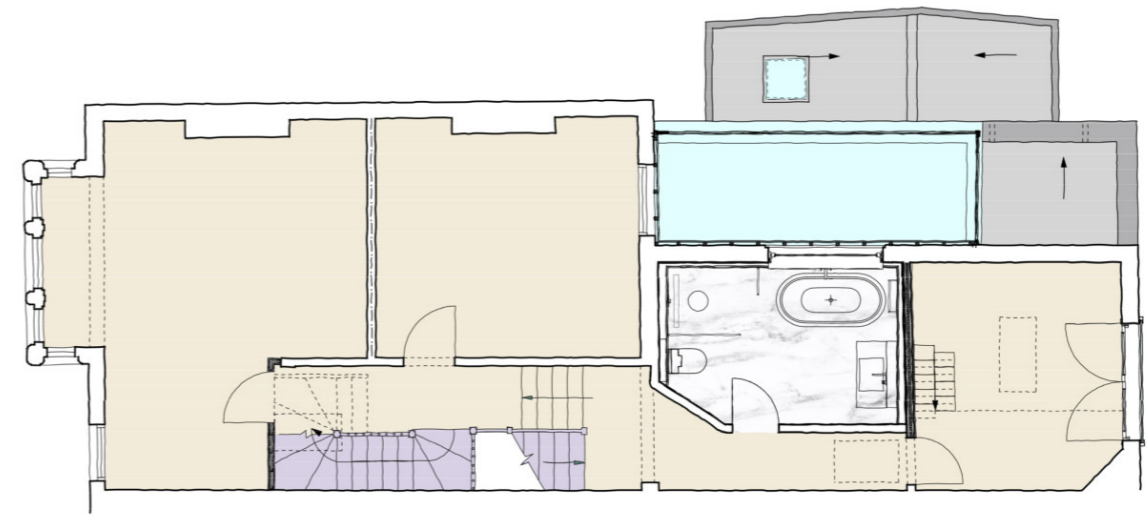
Our design proposals altered and extended the internal layout at ground floor level by partially infilling the gap to the side of the property and adding a glazed rear extension to improve outlook and access to the rear garden.



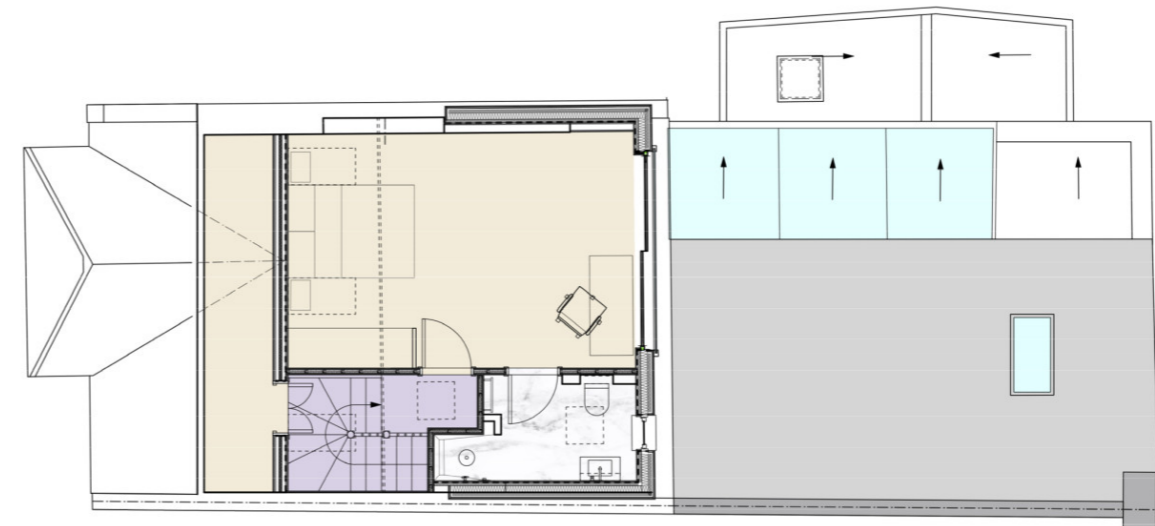
The ground floor side extension is set back from the main frontage and creates a much needed utility room. The rear infill extension includes a large structural glass rooflight and minimal frame sliding glass doors.



The ceiling/roof of the rear childrens bedroom in the closet wing was opening up in order to create a double height space to include a raised mezzanine bed platform.



At roof level we created a full width dormer with a guest bedroom suite that features views out towards the park beyond the rear boundary.



The development is located in Crouch End, North London.





